

**SPOKANE REGIONAL HEALTH DISTRICT  
ENVIRONMENTAL HEALTH DIVISION**

DATE: 7/21/2000

TO: File

FROM: Don Copley

RE: Septic system approvals for proposed lots 1 through 9 of Stentz Road, Section 4, T23N, and R43E, in Spokane, County

---

The following is a list of septic system approvals for lots 1 through 9 of Section 4, T23N, and R43E, in Spokane, County. The recommendations and approvals listed below are based on the Spokane Regional Health District Rules and Regulations for On-Site Sewage Systems for Spokane County, December 1996. Mr. Bagby is aware that future changes in the above regulations could result in changes to the recommendations and approvals listed below. Mr. Bagby is also aware that septic system approvals do not guarantee a buildable lot, and that he and/or his buyers need to check with the Spokane County Building and Planning departments for Critical Areas Ordinance, Flood zones, ect., which might impact development of the proposed parcels. Test hole area locations located on proposed lots will require a licensed engineers approval for four-bedroom septic systems. Other lots may require either a community shared system or designated easements for on-site sewage systems.

Test hole locations indicated on the attached maps are approximate only. Mr. Bagby has indicated he will supply accurate test hole location information to the buyers and the Health District for each lot (information may be supplied to the Health District by the buyer as a part of the engineered plan submittal process).

Lots listed below are approved for alternative sewage systems for a maximum of four bedrooms contingent on licensed engineered approval for drainfield size and placement. Sewage systems are required to be installed in approved test hole areas only. (Some lots have test holes approved for other lots that may require easements for drainfields, also designated easements for transport lines, septic tanks, and pump chambers.). All proposed lots are required to make application for the installation and operation permits for septic systems. Site visits by our office will be required after application has been made to verify site location and to determine if the sites have been altered in a manner which would effect system approval (no surface grading in the approved test hole sites is allowed). The following items are required to be submitted prior to permit release.

1. Application and permit fees as required.
2. Submit letter from licensed engineer and/or engineered plans for review.

3. Building permit applications or information review forms with Required signatures.
4. Well information as required including well logs, 4 hour pump, test and bacteria and nitrate test.
5. Other paperwork or information deemed necessary to approve application/permit for approvable on-site sewage disposal.

Septic system site approvals are as follows:

- Site A-Lot 5: North end on Bench next to Stentz Road:  
3-bedroom, possible 4-bedroom, Intermittent Sand Filter System or Aerobic Treatment Unit (ATU) with disinfection. Maximum drainfield (df) depth 20 inches, 6 to 12 inches capfill.
- Site B-Lot 4: North third in trees and bushes level:  
4-bedroom with engineer approval (drainfield layout) Intermittent Sand Filter System or ATU with disinfection. Maximum drainfield depth 12 inches, 12 to 18 inch capfill.
- Site C-Lot 4: North third in trees and bushes level:  
4-bedroom with engineer approval (drainfield layout) Intermittent Sand Filter System or ATU with disinfection. Maximum df depth 12 inches, 12 to 18 inch capfill.
- Site D/E-Lot 2: North third in open area two test hole areas:  
4-bedroom with engineer approval (drainfield layout) Intermittent Sand Filter System or ATU with disinfection. Maximum df depth 12 inches, 12 to 18 inches capfill.
- Site F-Lot 1&10: Southeast corner to southwest corner in treed southeast sloping 14 test holes for common pressure drainfield area. Test hole area approved for pressure drainfield or ATU with disinfection. Drainfield depth 18 inches only, 6 to 12 inch capfill. Licensed engineer to determine maximum number of drainfields can fit in approved test hole area due to compound slopes, easements, etc.
- Site G-Lot 10: South end of lot:  
4-bedroom Intermittent Sand Filter System or ATU with disinfection, drainfield depth 12 inches maximum. 12 to 18 inch capfill.
- Site H-Lot 5: South end of lot:  
4-bedroom Intermittent Sand Filter System or ATU with disinfection. Drainfield depth 12 inches maximum, 12 to 18 inch capfill (proposed drainfield area must meet all rules and regulations for flood zone elevations and wetland setbacks).
- Site I-Lot 6: South end of lot:  
4-bedroom Intermittent Sand Filter System or ATU with disinfection. DF depth 12 inches maximum. 12 to 18 inch capfill. (proposed df area must meet all rules and regulations for flood zone elevations and wetlands setbacks).

July 21, 2000  
Hourly Test Holes Stentz Road  
Page 2

Lots 7,8,9: No test holes evaluated for these lots.

ADDITIONAL TEST HOLE INSPECTIONS AND FINDINGS 09/13/00:

- Lot 7 (J): 4-bedroom, Pressure Drainfield System or Aerobic Treatment Unit (ATU) with disinfection. Drainfield depth 12 inches With 12 to 18 inch capfill.
- Lot 8 (K): 4-bedroom, Pressure Drainfield System or ATU with disinfection. Drainfield depth 12 inches with 12 to 18 inch capfill. Easement from Lot 7 required.
- Lot 9 (L): 4-bedroom, Pressure Drainfield System or ATU with disinfection. Drainfield depth 12 inches with 12 to 18 inch capfill. Possible conventional Df, depending on well log, with 18 inch Depth (extra gravel), as per my notes and soil exam form).
- Lot 9 (M): 4-bedroom, Pressure Drainfield System or ATU with disinfection. Drainfield depth 12 inches with 12 to 18 inch capfill. Possible conventional drainfield, depending on well log for Site. Must maintain 100' setback from high water mark of pond Area to south (must stay 75 feet from designated wetland And vernal wetland to northwest side of test hole area.)
- Lot 10 (N): 4-bedroom, .45 soil loading rate conventional drainfield. 18 inch maximum, 12 inch gravel depth with 12 inch capfill. Must be in approved test hole area (see map).
- Lot 3 (O): 4-bedroom, Intermittent Sand Filter System or ATU with disinfection. Drainfield depth 12 inches maximum. 12 to 18 inch Capfill.

All systems are required to be designed, installed and maintained according to current Spokane Regional Health District Rules and Regulations for On-Site Sewage Systems.

# SOUTHRIM ESTATES

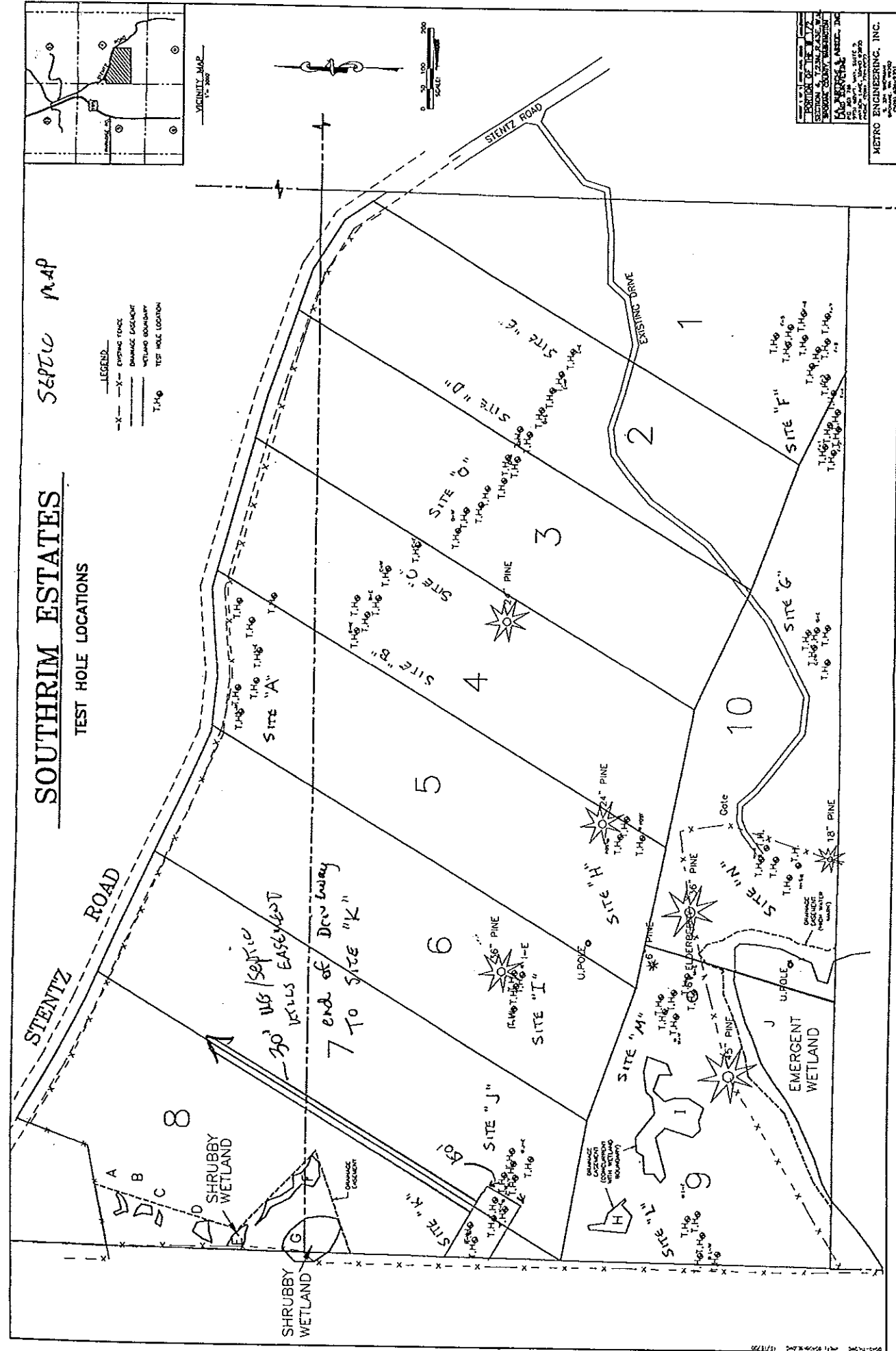
SEPTIC MAP

TEST HOLE LOCATIONS

- LEGEND
- X- EXISTING FENCE
  - X- DRAINAGE EASEMENT
  - X- WETLAND BOUNDARY
  - T.H.G. TEST HOLE LOCATION

VICINITY MAP  
1" = 200'

0 50 100 200  
SCALE



SECTION 1, T23N, R23E, W2  
PLANK COUNTY, MINNESOTA  
METRO ENGINEERING, INC.  
11111 15TH AVE. S., SUITE 200  
MINNEAPOLIS, MN 55425  
PHONE: 612-338-1000  
FAX: 612-338-1001

METRO ENGINEERING, INC.  
11/17/95